



King Edwards Road, London, E9

BUTLER & STAG



Stunning two bedroom, second floor apartment set within this magnificent double fronted Victorian conversion, in close proximity to Victoria Park. Accessed via communal entrance with stairs leading to the second floor, the apartment comprises, large living room with high ceilings, sash windows and solid wood floors. The living space is part open-plan to the fully fitted and integrated kitchen. There are two double bedrooms, the master boasts substantial built in wardrobe space and two fabulous bathrooms (one en-suite).



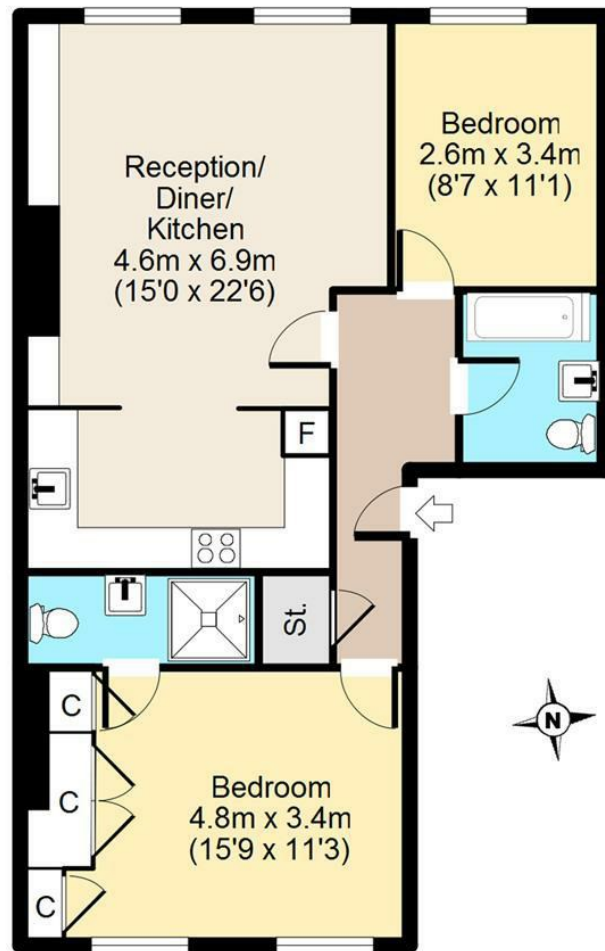
- Available unfurnished
- Underfloor Heating
- High Ceilings
- Two Bathrooms (one-en-suite)
- Solid Wood Floors
- Presented Immaculately





Second Floor

Approx. 70 sq. meters (754 sq. feet)



Total area: approx. 70 sq. meters (754 sq. feet)

For illustration purposes only - not to scale

IMPORTANT NOTICE - These particulars have been prepared in good faith and they are not intended to constitute part of an offer or contract. We have not performed a structural survey on this property and the services, appliances and specific fittings have not been tested. All photographs, measurements, floor plans and distances referred to are given as a guide and should not be relied upon.

BUTLER & STAG

☎ 020 8102 1236

🏠 508 Roman Road, Bow, London, E3 5LU

✉ bow@butlerandstag.com

www.butlerandstag.uk